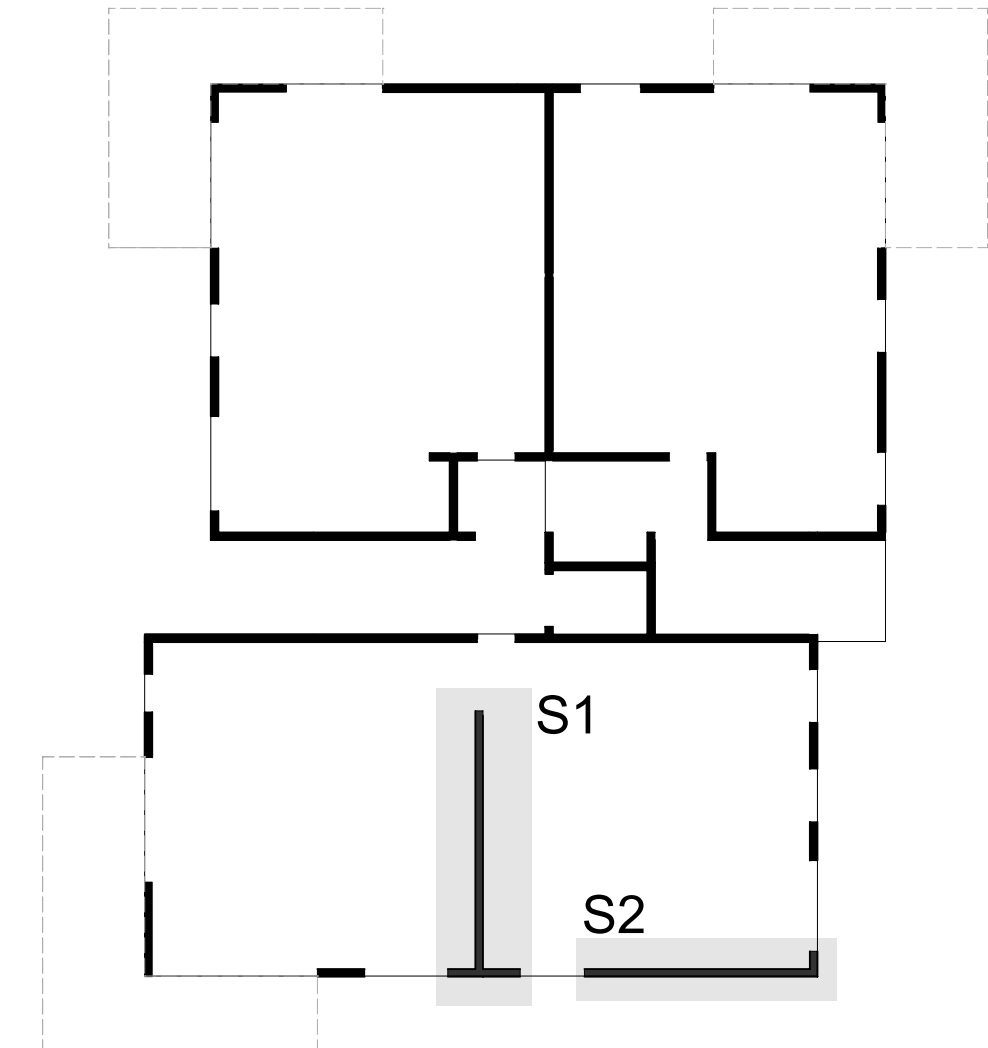


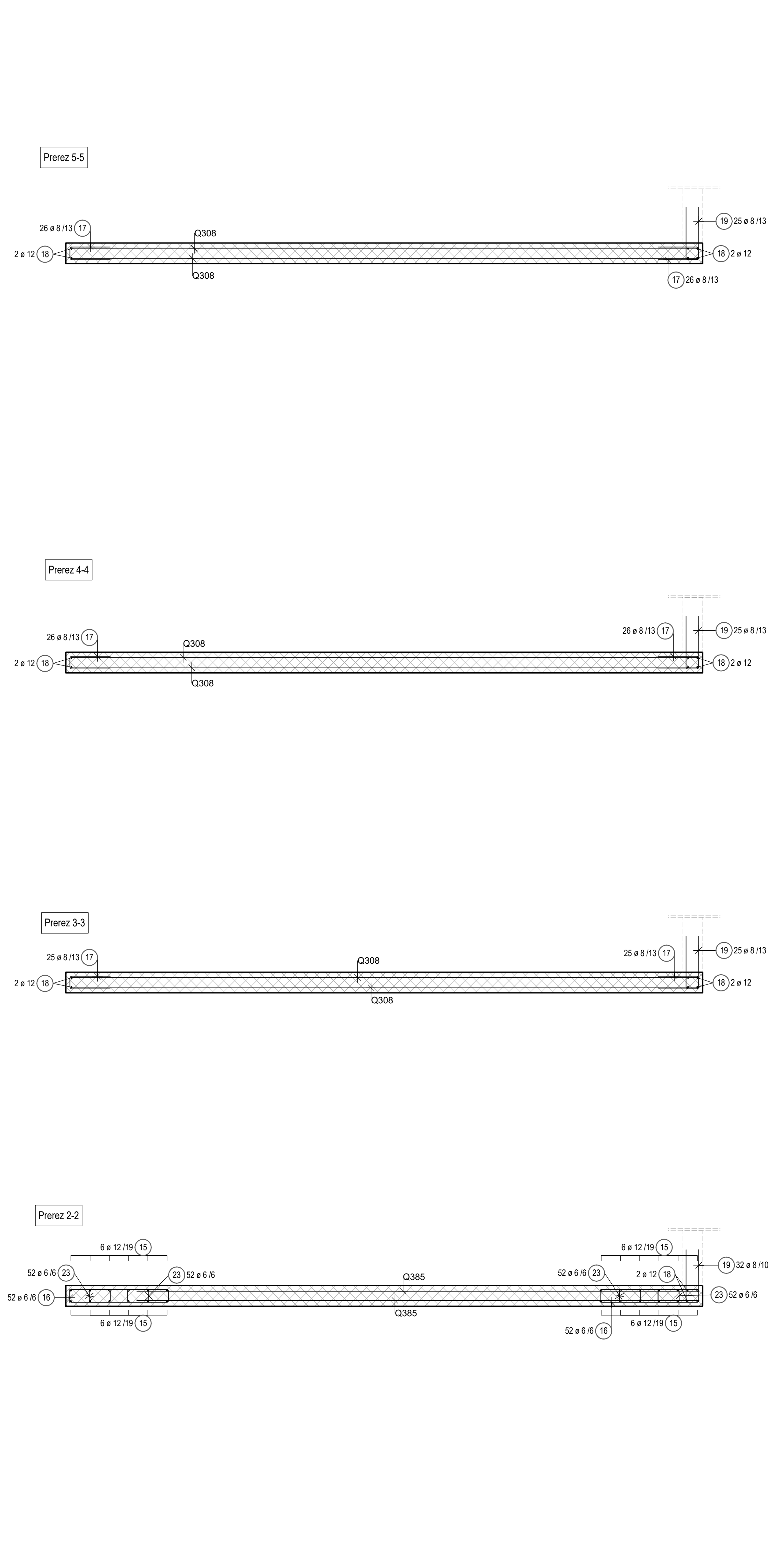
Izvek armature

Poz	n	ø	Dožina	Oblika in mere	Dožina'n	Teža
[kos]	[mm]	[m]	[cm]		[m]	[kg]
15	24	12	3.78	378	90.72	83.46
16	104	6	2.29	127	238.16	54.78
17	154	8	0.91	40	140.14	57.18
18	20	12	3.83	383	76.60	70.47
19	109	8	1.15	31	125.35	51.14
20	534	8	1.10	110	587.40	239.66
21	16	12	6.20	620	99.20	91.26
22	244	8	1.03	40	251.32	102.54
23	208	6	0.79	127	164.32	37.79
24	24	12	1.60	160	38.40	35.33
Skupna teža [kg]:						823.61

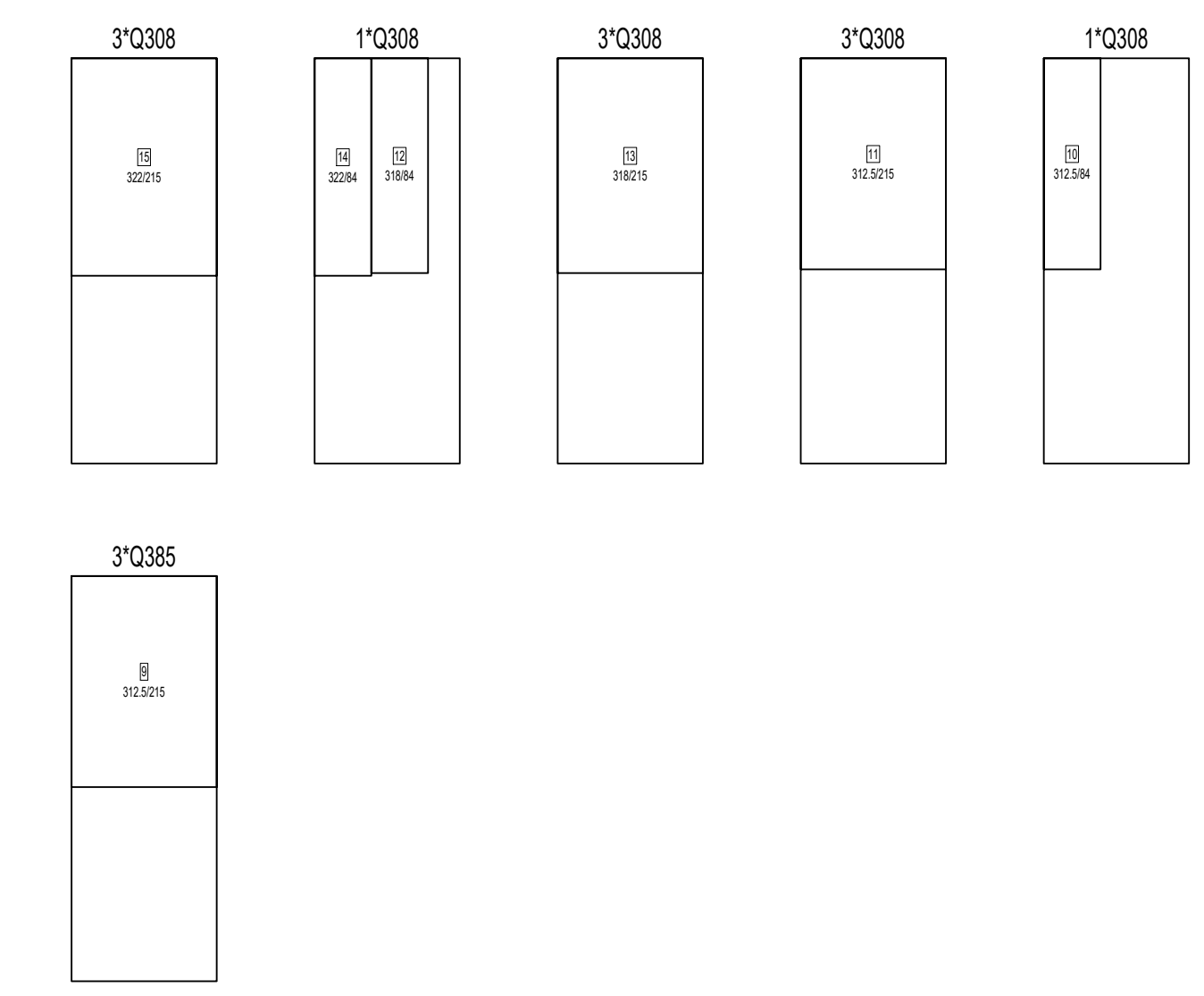


Izvek armaturnih mrež

Poz	n	Tip mreže	Dožina [m]	Širina [m]	Neto teža [kg]
9	3	Q385	3.130	2.150	123.16
10	1	Q308	3.130	0.840	12.61
11	3	Q308	3.130	2.150	96.83
12	1	Q308	3.180	0.840	12.83
13	3	Q308	3.180	2.150	98.53
14	1	Q308	3.220	0.840	12.99
15	3	Q308	3.220	2.150	99.77
Skupna neto teža [kg]					456.72



Razrez mrež



No pcc	Ime	Gross [kg]	Net weight
11	Q308	681.67	333.57
3	Q385	236.46	123.16
14	Total	918.13	456.72

ARMATURNI NAČRT STENE S2

1:25