

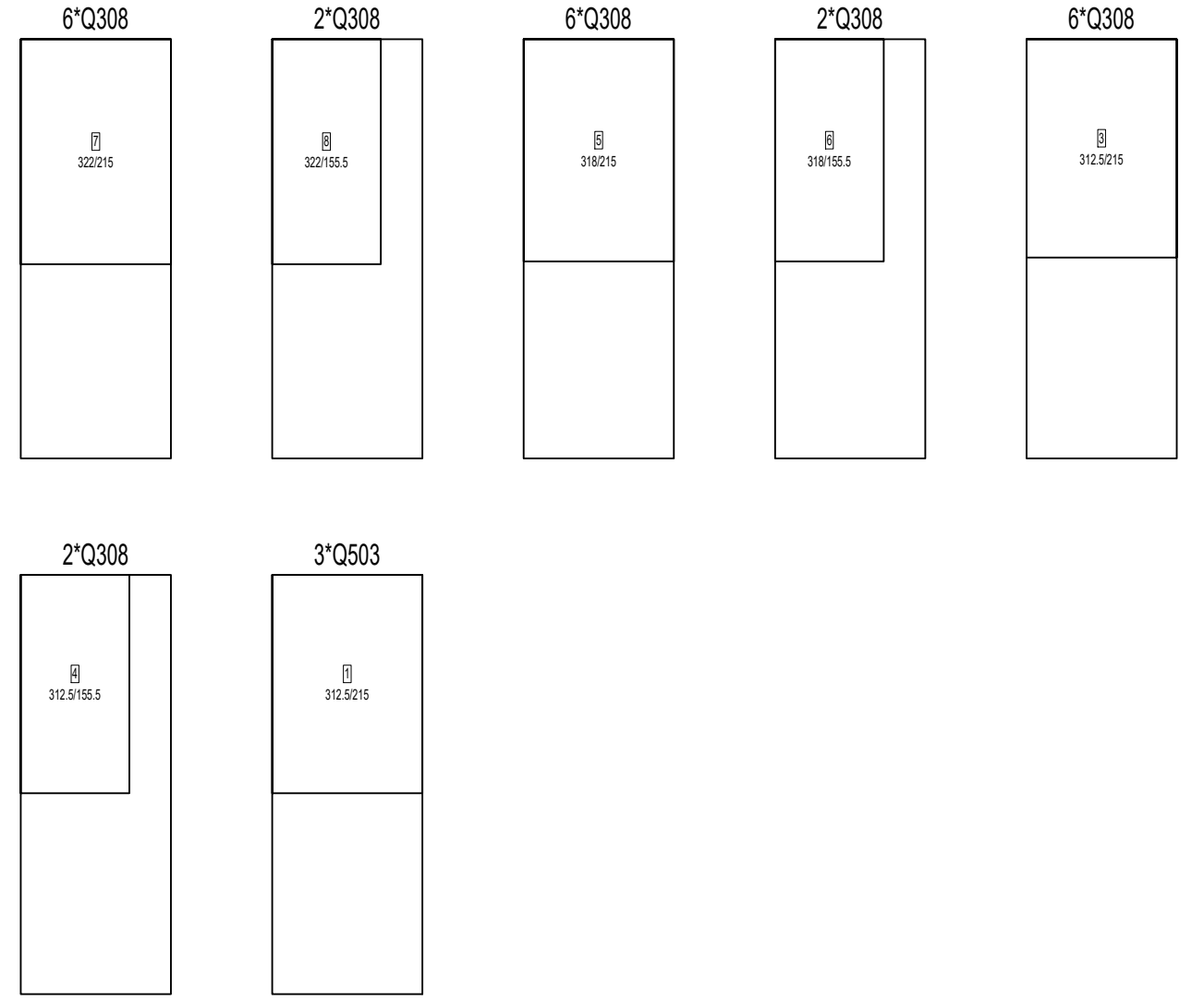
Izvek armature

Poz	n	ø	Dožina	Oblika in mere	Dožina* ⁿ	Teža
[kosa]	[mm]	[m]	[cm]	[m]	[kg]	
1	90	6	2.51		225.90	51.96
2	28	12	3.78		105.84	97.37
3	180	6	0.81		145.80	33.53
4	90	6	0.32		28.80	6.62
6	77	8	0.91		70.07	28.59
7	10	12	3.83		38.30	35.24
9	2	12	3.22		6.44	5.92
10	77	8	1.17		90.09	36.76
11	412	8	1.10		453.20	184.91
12	55	8	1.06		58.30	23.79
13	2	12	7.03		14.06	12.94
14	28	12	1.10		30.80	28.34
Skupna teža [kg]:						545.97

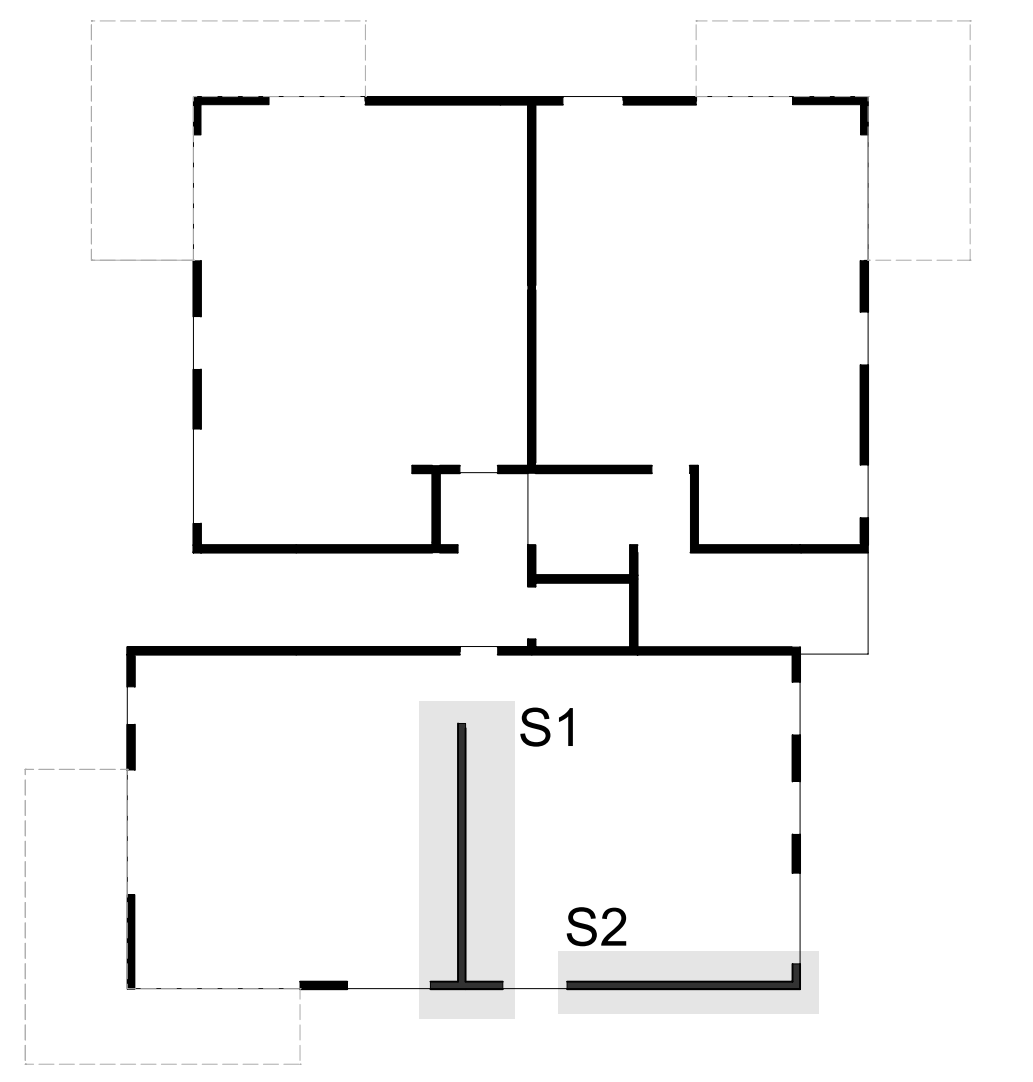
Izvek armaturnih mrež

Poz	n	Tip mreže	Dožina [m]	Širina [m]	Neto teža [kg]
1	3	Q503	3.130	2.150	160.92
3	6	Q308	3.120	2.150	193.66
4	2	Q308	3.120	1.560	46.69
5	6	Q308	3.160	2.150	197.06
6	2	Q308	3.180	1.560	47.51
7	6	Q308	3.220	2.150	199.54
8	2	Q308	3.220	1.560	48.11
Skupna neto teža [kg]:					893.49

Razrez mrež



No. poz	Name	Gross [kg]	Net weight
24	Q308	1487.28	732.57
3	Q503	308.97	160.92
27	Total	1796.25	893.49



ARMATURNI NAČRT STENE S1

1:25